

Agile Solution for Data Center Lynx-CustomFit™ Splice-On Connector

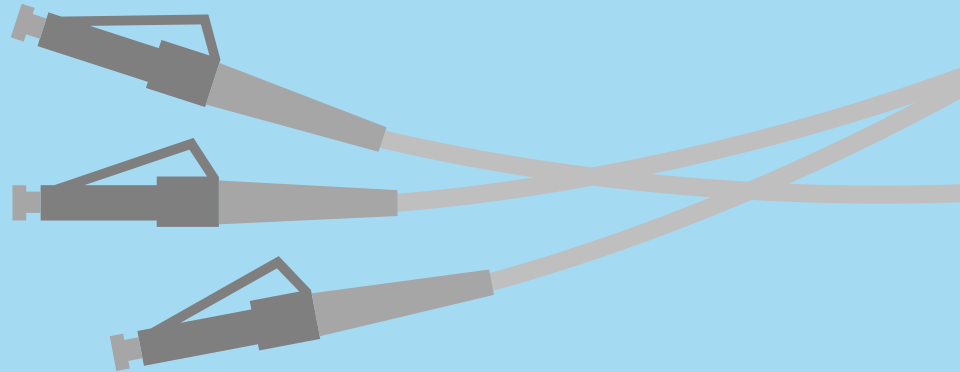
SUMITOMO ELECTRIC INDUSTRIES, LTD.

March, 2019



Problems at the Data Center

Conventional Pigtail Solutions present issues at every step of the installation.



Problems at the Data Center



On-Site

- Difficult cable installation
- Handling of excess length
- Rack space
- Urgent maintenance

Management

- Time consuming pre-survey
- Ordering process
- Delivery lead time
- Stock management



Solutions at the Data Center

Custom solutions which prove massive efficiencies across stock management, cabling, maintenance, and manufacturing.



Solutions at the Data Center



On-Site

- Plug head less Cable laying
- Just Length
- Rack space saving
- Quick recovery

Management

- No Pre-survey
- No Patch cord Design
- Time saving
- Simple stock management



First, It Starts With Smooth Cable Installation



No Pre-Survey and Cabling Design

Conventional Pigtail Cabling

Troublesome order procedure
or you have to have many SKU in stock



6. Installation



Lynx-CustomFit™ Solution

Just prepare Lynx connectors and bulk
cables, and immediately start!



1. Installation



Slackless Cable Management

Conventional Plug & Play Solution



Chaotic routing due to use of fixed length pre-terminated cords



Lynx-CustomFit™ Solution



Slackless cable management with Lynx connectors



Rack Space Saving (Depth)

Conventional Pigtail Solution



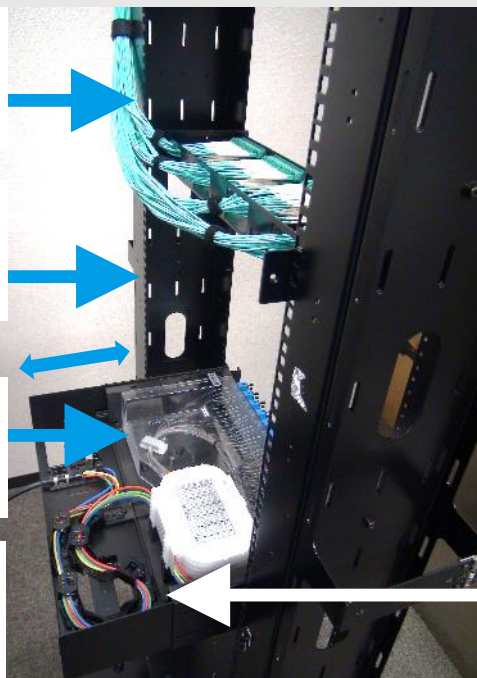
Conventional tray with splice tray

Lynx does not need splicing tray so the panel can be smaller

This much shortened

This is panel for conventional pigtail solution

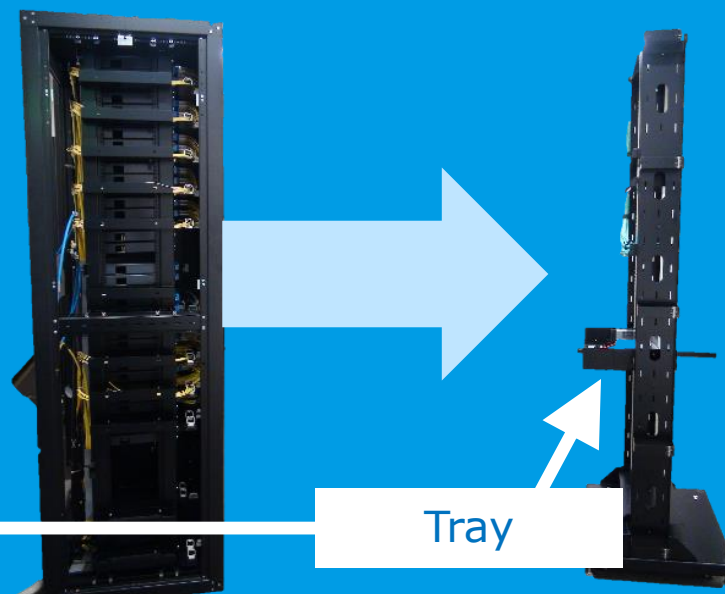
It needs space for splice tray



Lynx-CustomFit™ Solution



Shallow panel without splice tray applicable



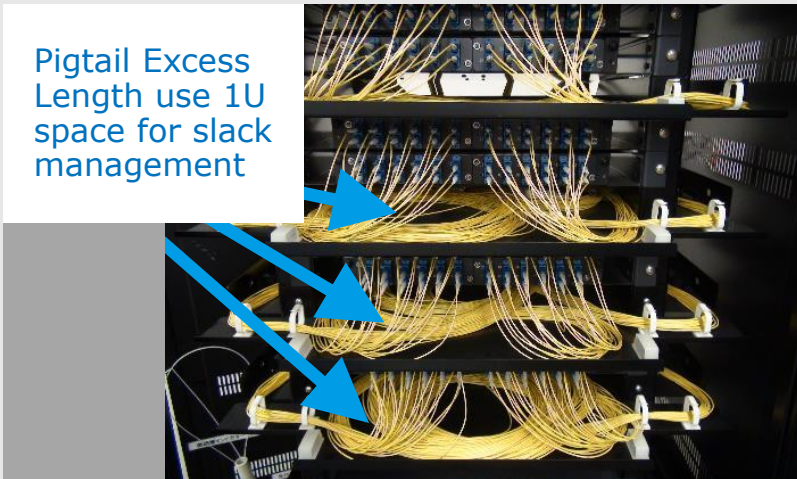
Rack Space Saving (Vertical)

Conventional Pigtail Solution

Conventional tray with splice tray



Pigtail Excess Length use 1U space for slack management

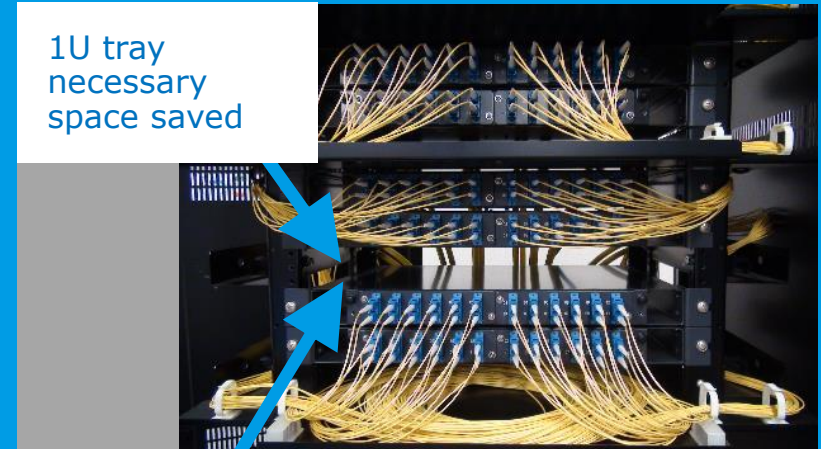


Lynx-CustomFit™ Solution

Shallow panel without splice tray applicable



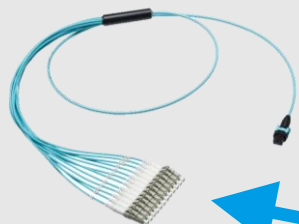
1U tray necessary space saved



We can place 1 more patching panel in this case

Urgent Maintenance (In Case of No Inventory)

Conventional Plug & Play Cabling

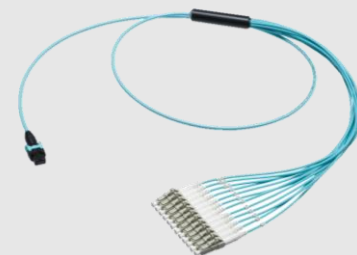


If only one connector end is dysfunction,
you have to replace all of the cable.



Only One is **NG**

Replace all



Lynx-CustomFit™ Solution



Just prepare Lynx
connectors and replace
only one connector
immediately!

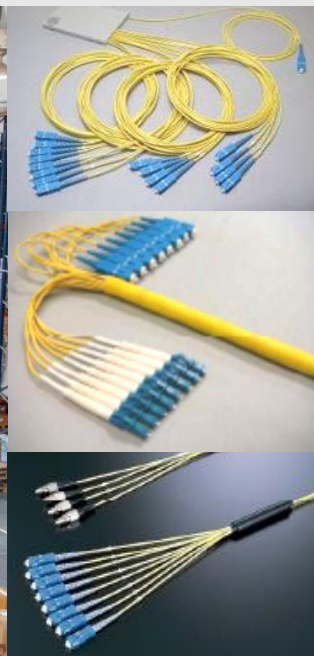


Quick Recovery

Stock Management

Conventional Pigtail Cabling

- Need to have various kinds of SKU
- Occupy stock yard



Lynx-CustomFit™ Solution

- Just stock Lynx connectors and bulk cables
- Less stock space required



100pcs of connectors can be stored in one cardboard box

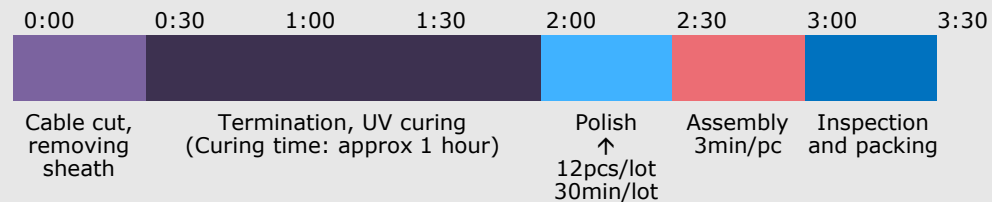
Manufacturing

Conventional Method



- Longer production lead time
- Skilled operators are required
- Consumables are expensive

72c Trunk Cable, 12 x MPO/Cable

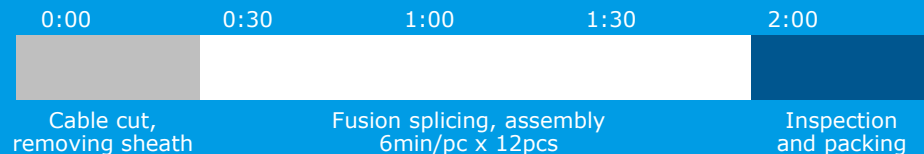


Lynx-CustomFit™ Solution

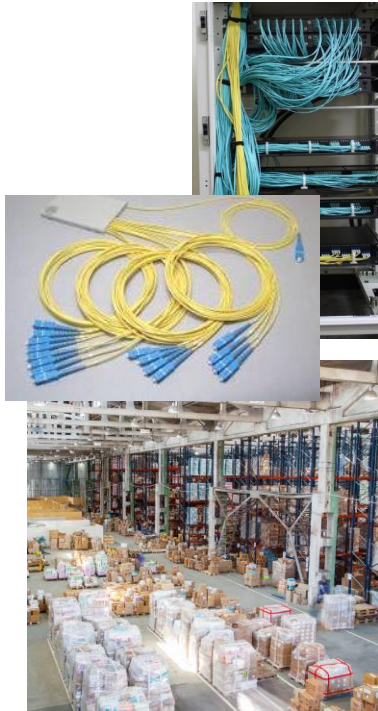



- Shorter production lead time
- Lower initial investment
- Skilled operators not required

72c Trunk Cable, 12 x MPO/Cable



Summary: Lynx-CustomFit™ Solution Solves Your Problems

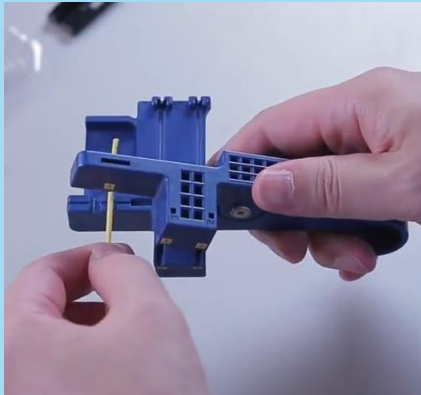
Problems at Data Center:	Conventional		Lynx-CustomFit™ Solution
Difficult Cable Installation	✗		✓
Handling of Excess Length	✗		✓
Rack Space	✗		✓
Urgent Maintenance	✗		✓
Time Consuming pre-survey	✗		✓
Ordering Process	✗		✓
Delivery Lead time	✗		✓
Stock Management	✗		✓
			

Lynx-CustomFit™

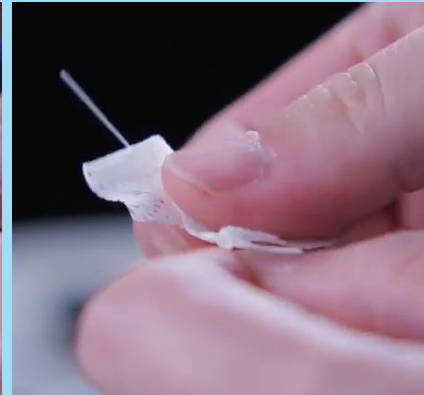
Field Assembly Splice-On Connector

STEP 1

Cord Preprocessing



Remove and slit the cord sheath using the Lynx strip & slit tool.



Remove the buffer and cleave the fiber.

Lynx-CustomFit™

Field Assembly Splice-On Connector

STEP 2

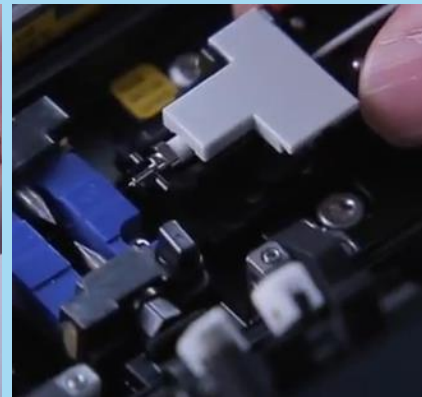
Fusion Splicing



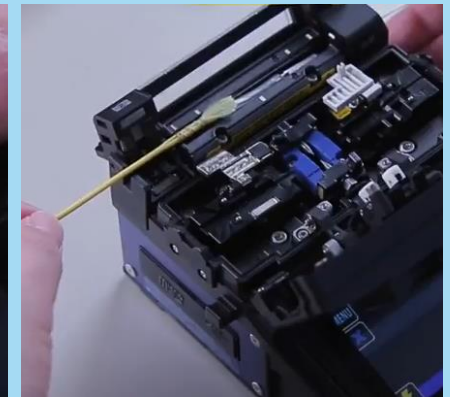
Set the fiber holder with the cord on the left side.



Set the ferrule into the holder and place it on the right side.



Close the wind hood and start the splice.



Move the spliced assembly into the oven and start heating.

Lynx-CustomFit™

Field Assembly Splice-On Connector

STEP 3

Assembly



After the heating,
remove the connector
from the oven.




While rotating the
rear housing, grip
the Kevlar® strands.




Remove the
dust cap.



Finished and
ready to use.



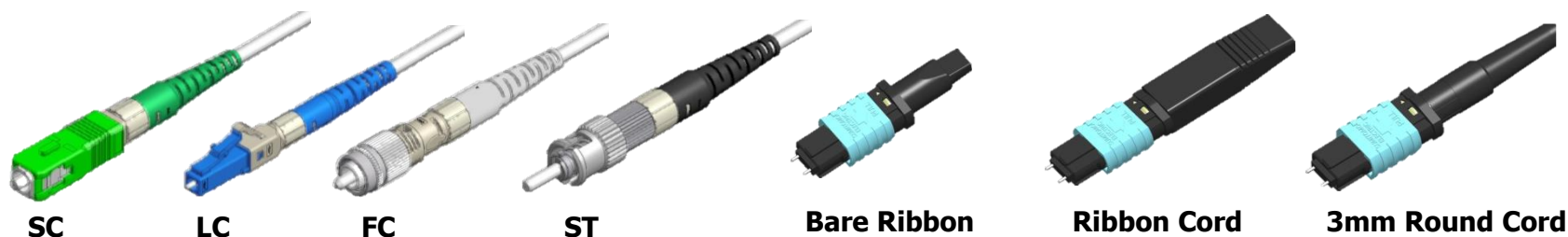
A New Cabling Experience at your Datacenter



Reference

Lynx-CustomFit™ Lineup and Specification

Full Line up for all needs



Applicable fusion splicers

Single Fiber	TYPE-71C/71C+/72C	TYPE-71M12	TYPE-201x/201ex	T-55	T-400S
MPO	TYPE-71M12				

Standards and optical performance

	SC	LC	FCM	ST	MPO
Interface standard	IEC61754-4	IEC61754-20	IEC61754-13	IEC 61754-2	IEC61754-7
Insertion Loss (against master plug)	SMF: Ave. 0.2dB, Max. 0.3dB MMF: Ave. 0.1dB, Max. 0.25dB				SMF,MMF Low Loss (LL) Max. 0.4dB SMF Standard Loss Max. 0.75dB
Return Loss (against master plug)	SMF: ≥ 60 dB (APC), ≥ 55 dB (UPC) MMF: ≥ 30 dB (PC)				